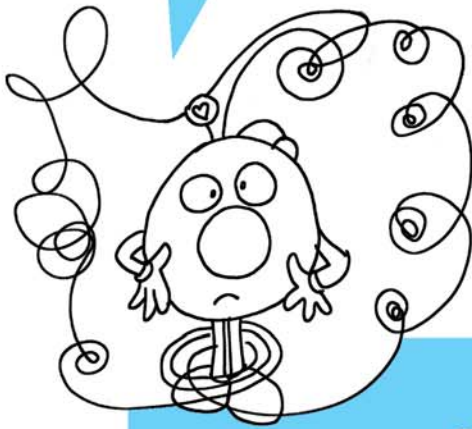




## Direction and Purpose

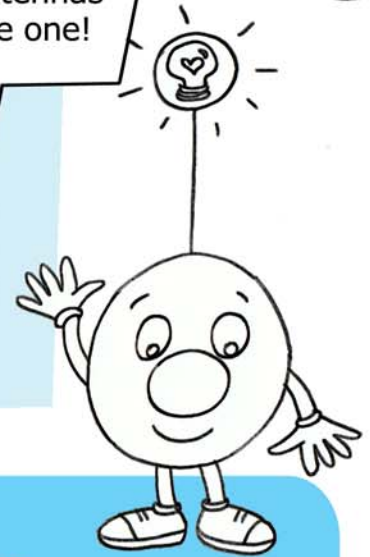
There are lots of roads to follow on planet earth and it's not always easy to find your way. But Marty learned that when you know where you want to go, finding the right road becomes easy!

My antennas are pointing to different roads. Which is the right one?



Wait! If I align my antennas they unite and become one!

Then I can tune into right action, and my own steps will lead me along the right path.



## ORIENTATION GAME!

### The Heart of the Sun

Materials: a big sheet of paper, paint and brushes, scissors, masking tape, coloured paper, a scarf.

Draw a big sun poster and colour it with your classmates, or at home with your friends and family. Tape it onto the blackboard or a wall. Use masking tape so you don't ruin the walls.

Cut out as many coloured hearts from the coloured paper as are the participants.

One participant blindfolds another one and then turns him/her around a few times, so they lose their sense of orientation. They need to find their way and walk towards the sun. Whoever pins the heart closest to the centre of the sun is the winner!

