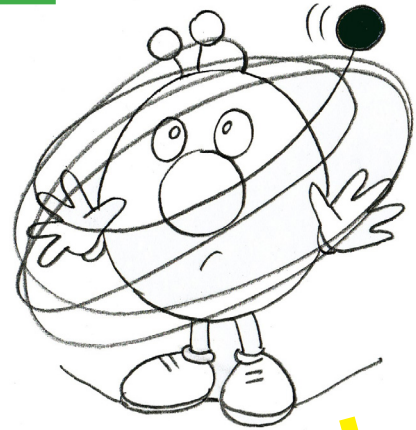


THE MAP

*There are lots of roads to follow on planet Earth.
How do I know which is the right one for me?*

Marty is on the planet, searching for his way back home. Are there any special roads to follow? Who does he meet during his adventures? What are the values and virtues that he feels are most important to always have with him?



*If I learn how to calm down my
antennas, I'll be able to see and
think more clearly! !*

Help Marty! Draw him a map!

You'll need a big piece of paper, coloured pencils, markers, an eraser. You can also add cut outs to your map to show what and who Marty meets along the way. In this case you need old magazines, glue and scissors! In the meantime, you can learn Marty's walking rhyme!



Marty's walking rhyme!

Make up the music, and sing along!

I jump and run, talk and play.
Day and night, night and day.
Around I walk, along I go.
As the sun shines and the rivers flow.

Step by step, I sing and dance.
For life on Earth is a special chance!
One thing's for sure, one thing I know.
I will learn something new,
where ever I go.